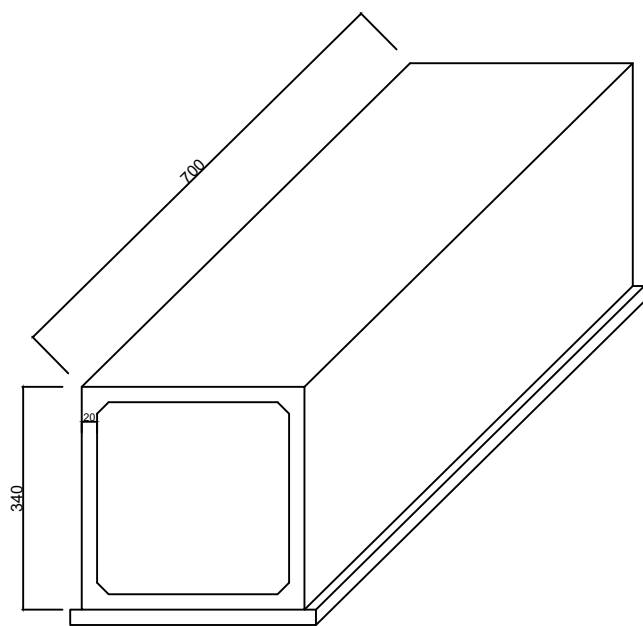
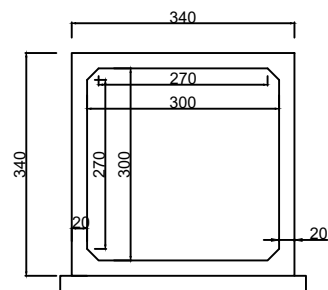


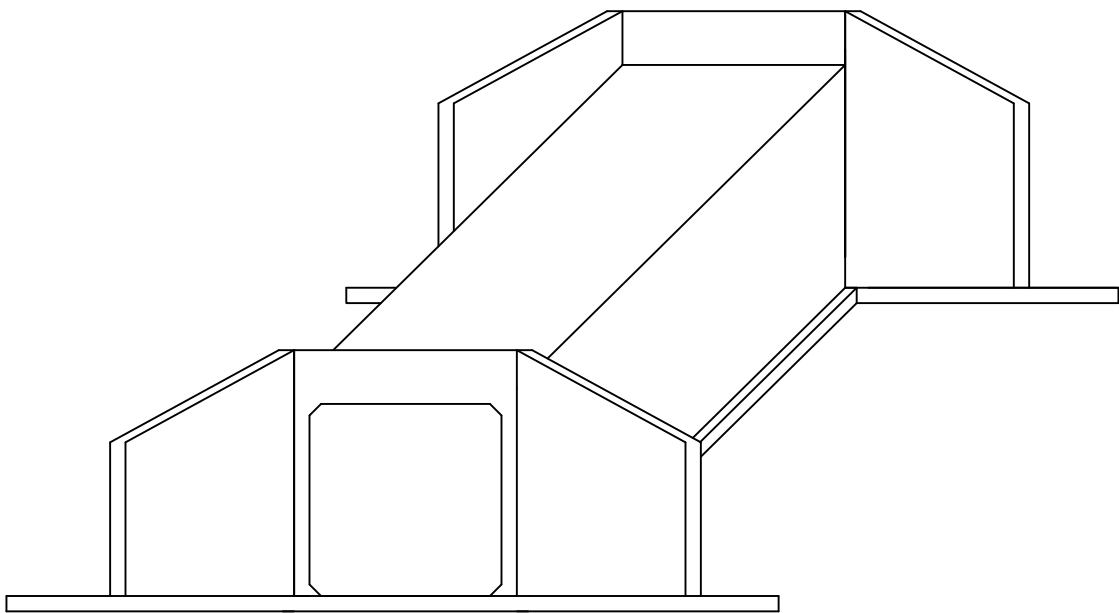
DETALHE  
ADUELA



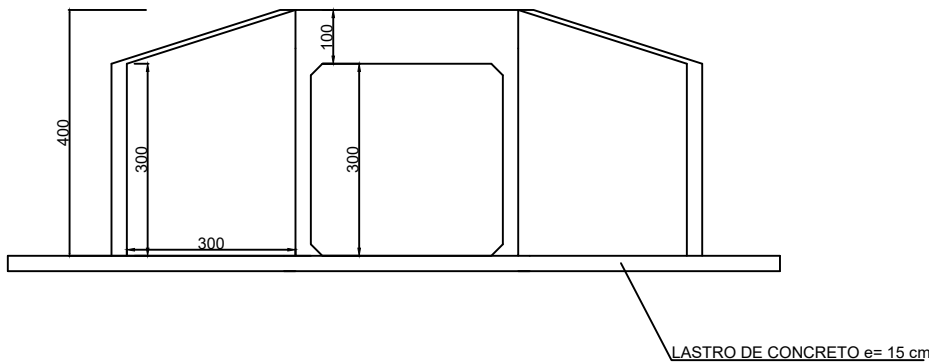
DETALHE  
ADUELA



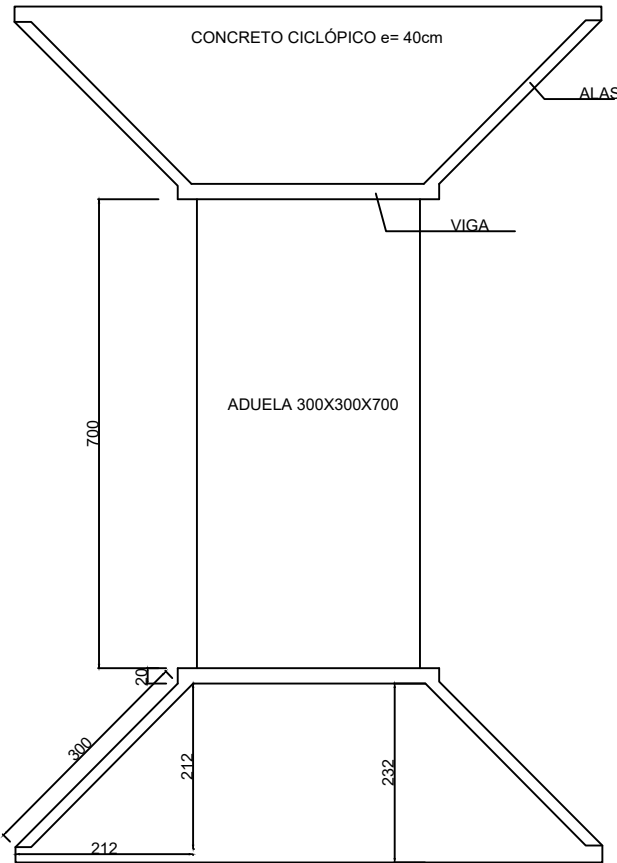
DETALHE



DETALHE  
"CABECEIRA"



PLANTA



PREFEITURA DE CHAPADA DOS GUIMARÃES		
SECRETARIA MUNICIPAL DE INFRAESTRUTURA		
ASSUNTO: BUEIRO SIMPLES CELULAR DE CONCRETO 300X300 cm		
OBRA: SUBSTITUIÇÃO DE PONTE POR ADUELAS		
LOCAL: CÓRREGO CARDAVASCO		
AUTOR DO PROJETO: _____		
ENG. DAYNA APARECIDA DA SILVA - CREA - MT 49.331		
COORDENADAS: 15° 7'34.28"S 55°51'14.29"W	DATA: AGOSTO/2021	
DIMENSÕES: 300X300X700 cm	VISTO:	FOLHA:
DESCRIÇÃO: LAYOUT		03/04